

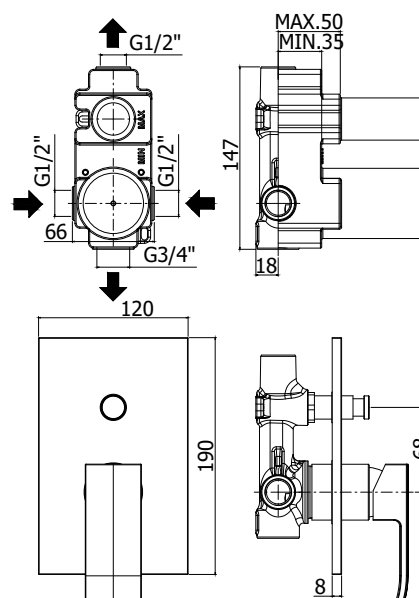
COLLECTION

# level

PRODUCT IMAGE



TECHNICAL DRAWING



DESCRIPTION

Concealed shower mixer (2 outlets) complete with:

- wall plate 120x190mm
- 1/2"G hot/cold and upper connections - 3/4"G lower connection

ART.

**LES 015 . . / LEC 015 . . / LEA 015 . .**

with push diverter

**ZPRO 028 . .**

Extension with diverter for art. 015

- H30mm

FINISHES

**LES**

- CR - chrome plated
- CR/M - chrome with stainless steel wall plate
- ST/M - steel looking with stainless steel wall plate

**LEC**

- CR - chrome plated
- CR/M - chrome with stainless steel wall plate
- ST/M - steel looking with stainless steel wall plate

**LEA**

- CR - chrome plated
- CR/M - chrome with stainless steel wall plate
- ST/M - steel looking with stainless steel wall plate

**ZPRO**

- CR - chrome plated
- ST - steel looking finish

DOCUMENTATION



FLOW DIAGRAM  
1



INSTALLATION  
INSTRUCTIONS



SPARE PARTS  
EXPLODED 1



PRODUCT PAGE

[www.paffoni.it](http://www.paffoni.it)